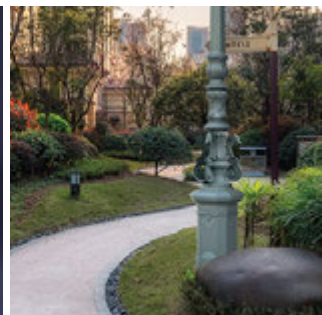
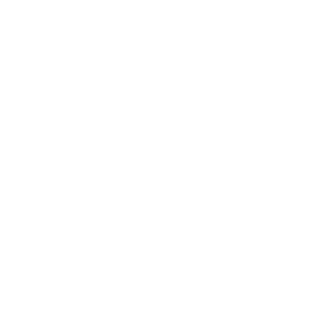
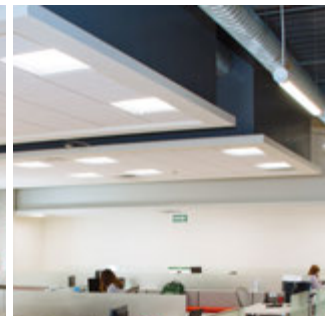
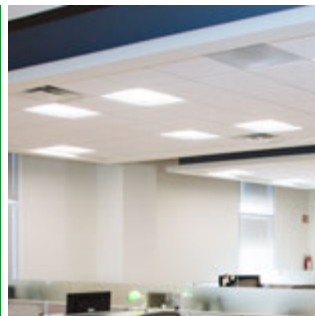
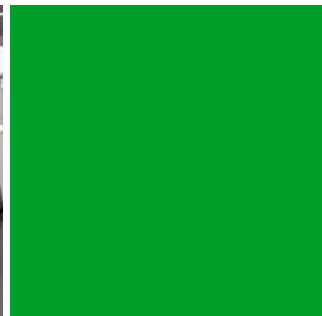
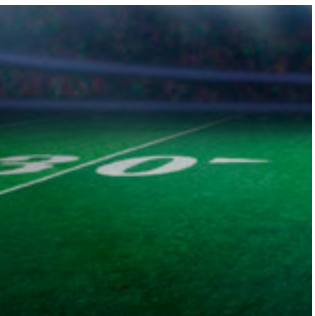
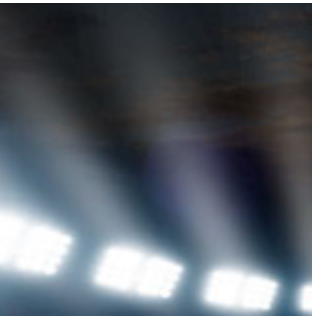
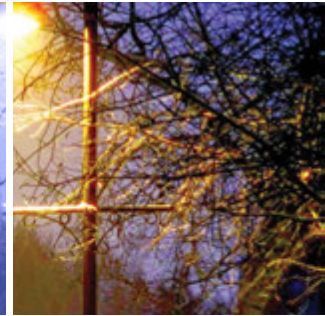


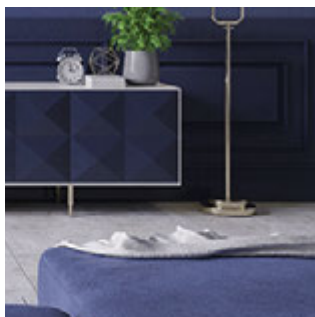


宏景城基
CHALMAX LIMITED



Product Portfolio

Lighting Solutions





ABOUT US

Chalmax was founded on the principles of advancement and creativity, and we are always ready to take up the challenge today. We are committed to providing high-quality, dependable goods and services. Our experienced customer service teams assist us on a daily basis. We coordinate with our channel partners to get our product to market across the globe. Our reliable system of distributors and retailers provides sales support, local inventory, and expertise for the end-consumer. Together, they form a relationship with Chalmax that has played an essential part in promoting our development throughout our journey.

Chalmax has been aware of the significance of intelligent lighting. We are focused on creating the happiest lighting experience for all mankind, based on the core values of virtue, duty, ingenuity, and hard work. Chalmax is a multinational corporation with such a focus on technological advancement and the global market. Our company primarily emphasizes designing energy-saving illumination products, including a broad array of cutting-edge LED SMD/Filament bulbs and LED fixtures such as recessed downlights, shop lights, ceiling fixtures, vanity lights, under-cabinet lights, and outdoor lighting fixtures.

We work with businesses to develop, produce, test, certify, bundle, kit, and deliver exceptional IoT devices and end-to-end IoT services to empower every element of the home and commercial building as a world-leading IoT solution provider. We use our refined skills to help power an intelligent environment, ensuring IoT interface interoperability by embracing multi-protocol standards, networks, and ecosystems.

Our purpose is to bring the highest product at the most sustainable cost structure to our valued customers all over the world through continuous improvement and well-managed expansions. We don't grow on our own; we grow alongside our clients.

WHY CHALMAX?

From our modest beginnings to the multinational company we've become today, our emphasis has always been on improving and increasing relationship. Both the ones we nurture with our consumers and the ones they share with loved ones while basking in the glow of our lights.

What is our promise? It's as plain as that: your plan's huge hit. How are we going to do it? From the thorough testing of our materials to the final fixture you see in the showroom, we pay close attention to the smallest information. Any step we take is aimed at enhancing our service to you. This involves continually innovating, designing on-trend looks, and bringing a high-quality product to the market.

High-quality goods are a major result of significant research. You can also rest assured that you'll get what you are looking for, and when you required it. Thanks to our geographically distributed fulfillment centers.



**WE'RE MORE THAN JUST
AN ILLUMINATION
CORPORATION AT CHALMAX.**



OUR KEYSTONES FOR EXCELLENCE:



Supporting our clients

Connecting and serving our customers, realizing what they want, and assisting them in their achievements is our core objective. We accomplish this by cultivating long-term relationships with our clients and instilling confidence in Chalmax's ability to generate and sustain opportunities that enable them to meet their strategic targets.



Discipline

Connecting and serving our customers, realizing what they want, and assisting them in their achievements is our core objective. We accomplish this by cultivating long-term relationships with our clients and instilling confidence in Chalmax's ability to generate and sustain opportunities that enable them to meet their strategic targets.



Emerging Entrepreneurial spirit

Entrepreneurial spirit when merged with market formation, organic growth, and acquisitions are all used to grow the company. Chalmax now has a diversified selection of well-known and well-respected brands, all of which are backed up by a committed, global workforce of employees and agents.



Evolving Our Workforce

Each of these key elements is addressed in evolving our workforce. It entails recruiting the right people and assisting them in their professional development. Chalmax has built an atmosphere where individuals can flourish by providing learning services, promoting diversity of opinion, and keeping itself and its workers to the highest ethical standards.

RESEARCH AND DEVELOPMENT:

Chalmax has excellent research & development expertise and employ them to drive growth through constant improvements. Since opening our doors, we've built a reputation for brilliance in the LED lighting space, and we've continued to broaden and improve our well-regarded product range to extend into and lead IoT divisions for enhancing everyday life through technology.

Chalmax focused on revolutionizing the development of advanced home/building products, making the smart living environment more intuitive, safe, and efficient, with the strength of self-development, belief in open ecosystems, and dedication to exceptional quality, protection, and service.

QUALITY:

We mainly focus on continuous improvement – in employees, goods, and processes – to ensure the company's performance and maintain high-quality standards. Chalmax drives competitiveness and imagination in all sectors by emphasizing reliability and versatility as a trusted partner and accredited supplier of the world's leading connectivity and lifestyle electronics companies.

We aim to please our customers by delivering high-quality goods and efficient services, as well as supporting the environment by establishing environmentally sustainable supply chains.

If you come across a Chamax product that does not work as anticipated, please contact our Customer Care Specialist right away. We will refund your account or substitute the product if it is found to be faulty in material or workmanship. We reserve the right to inspect any faulty product in order to help uphold our level of quality.

Compliance with the RoHS Directive

Chalmax provides a comprehensive range of products that are RoHS compliant as well as meeting other environmental requirements limiting or eliminating such materials in the pursuit of minimal environmental impact and providing eco-care product solutions to our clients.



**HIGH-LEVEL EXPECTATIONS
ARE NOT LIMITED TO SINGLE GOODS
OR SERVICES AT CHALMAX.**

SOCIAL RESPONSIBILITY

We take pride in, bringing each other up to be our better version, and it connects to everything we do to help our clients and partners grow.

Maintaining a results-driven mindset when going forward with grateful hearts.

Building long-lasting products, processes, and partnerships focused on honesty, integrity, and mutual confidence.

Recycling is a vital necessity that is built into our packaging process. Our inner-box packaging is made of molded paper pulp, which is both recyclable and environmentally friendly.

Since our items are versatile and recyclable, they can be easily removed during the recycling process. To deliver maximum impact while meeting customizable needs, we use common components to reduce the number of LED modules produced.

**WE'RE PUSHING OURSELVES
TO CONTINUE ON A COURSE
THAT'S SOCIALLY RESPONSIBLE.**



APPLICATION



Communications and Workplaces:

New styles of work necessitate the adaptation of spatial configuration and lighting systems. Flexible staff, flexible design, and flexible lighting are needed to improve communication and morale while also improving the efficiency of performing and spending time at the office.



Learning and Research:

Using light to improve communication, perception, and social understanding: in educational facilities, intelligent lighting solutions with optimal color properties increase people's attention and improve visual comfort.



Well-being and Health:

In hospitals, sanatoriums, and nursing homes, light improves patients' sense of well-being, provides a living-room atmosphere, facilitates the completion of visual activities in various treatments and assessment procedures, and makes navigation easier.



Industrial and Engineering

The durability, performance, and building management system of industrial buildings are put to the test the most in construction. In manufacturing and production bays, as well as storage facilities and labs, the optimal light is the foundation for any effective work.



Hotel and resorts:

The lighting solution that activates all senses and makes guests feel relaxed and comfortable begins with the lighting solution: spotlights, recessed luminaires, light lines, or imaginative LED solutions.



Performance and Retail:

Retailing environments must provide a high level of customer service, and their architecture becomes an illustration of the brand's statement. These environments of experience include highly customized lighting solutions that incorporate LED technologies.

SMART PRODUCTS
FOR SMART ENVIRONMENT.
MAKE IT BETTER.

Content

Indoor Lights



01

Downlights



02

Spot Light



03

Strip Lights



04

Track Lights



05

Panel Lights

Outdoor Lights



01

Flood Lights



02

Wall Lights



03

Wall Washer
Lights



04

Inground Lights

Industrial Lights



01

Street Lamp
Head



02

High bay Lights



01 Indoor Lights
DOWN LIGHTS



QT014200

Product Description

1. The light source uses high-quality LED lamp beads, the light color is pure, the color temperature is high, and the whole light effect can reach 80LM/W.
2. The high-quality diffuser is used, the light transmittance is high, and the light is uniform and soft.
3. The DOB scheme, built-in high efficiency Constant current drive, stable energy saving, more compact lamp body.
4. Face ring edge flanging design, seamlessly fits the ceiling after installation, beautiful and durable.
5. Ultra-thin design, the whole lamp is within 36mm, suitable for various ceiling installations.
6. Family design, with a high degree of recognition, the overall line is smooth and concise.

Sr. No.	Model	Power	Beam Angle	Luminous Flux	Color Temperature	Material
01	QT0142003C30Z9101	3	100°	270	3000/4000/5700K	PP
02	QT0142005C30Z9101	5	100°	450	3000/4000/5700K	PP
03	QT0142005C57Z9101	7	100°	630	3000/4000/5700K	PP
04	QT0142009C30Z9101	9	100°	810	3000/4000/5700K	PP
05	QT0142012C30Z9101	12	100°	1080	3000/4000/5700K	PP
06	QT0142015C30Z9101	15	100°	1350	3000/4000/5700K	PP



QT01610

Product Description

1. Modular design, 4 optoelectronic modules and 8 reflector modules, through the card position combination, easy to match, to meet different light needs.
2. Using high-efficiency light source modules, the luminous efficiency reaches 80LM/W.
3. The design of deep hidden light source can effectively control the glare.
4. According to the different preferences of customers, three kinds of face rings of champagne gold, black and mirror can be selected.

Sr. No.	Model	Power	Beam Angle	Luminous Flux	Color Temperature	Material
01	QT0161004C30N9101	4	80°	360	3000/4000/5700K	Aluminum +PC
02	QT0161007C30N9101	7	80°	630	3000/4000/5700K	Aluminum +PC
03	QT0161010C30N9101	10	80°	900	3000/4000/5700K	Aluminum +PC
04	QT0161015C30N9101	15	80	135	3000/4000/5700K	Aluminum +PC



QT01630

Product Description

1. The light source uses high-quality LED light source, high luminous efficiency, and good color temperature consistency;
2. Reasonable light source arrangement and high light transmission diffuser, uniform and soft light.
3. High-efficiency and stable drive, safe and reliable.
4. Unique Deeply hidden anti-glare design, greatly reducing the generation of glare.
5. The outer shell is made of high-quality die-cast aluminum lamp body, which is sturdy and durable, and has excellent heat dissipation performance.

Sr. No.	Model	Power	Beam Angle	Luminous Flux	Color Temperature	Material
01	QT0163012C57M9101	12	60°	1020	3000/4000/5700K	Aluminum
02	QT0163012C57Z9101	12	100°	1020	4000/5700K	Aluminum
03	QT0163024C30M9101	20	60°	1700	3000/4000/5700K	Aluminum
04	QT0163020C57Z9101	20	100°	1700	4000/5700K	Aluminum
05	QT0163024C57M9101	24	60°	2040	3000/4000/5700K	Aluminum
06	QT0163024C40Z9101	24	100°	2040	4000-5700K	Aluminum
07	QT0163030C40M9101	30	60°	2500	3000/4000/5700K	Aluminum
08	QT0163030C40Z9101	30	100°	2550	4000/5700K	Aluminum
09	QT0163040C30M9101	40	60°	3400	3000/4000/5700K	Aluminum
10	QT0163040C40Z9101	40	100°	3400	4000/5700K	Aluminum



GT01560

Product Description

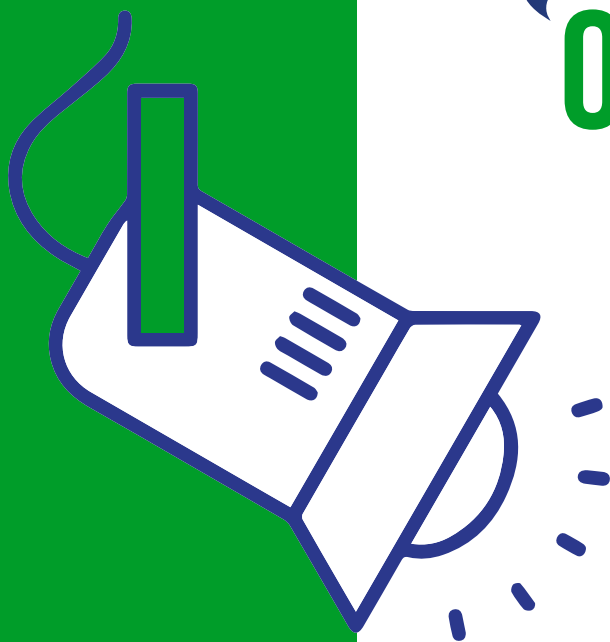
1. The light color is pure, and the color temperature consistency is good.
2. Deeply hidden light source, scientific reflector cooperation, soft and comfortable light.
3. Built-in high conversion efficiency LED drive power, constant power output, performance Stable.
4. A variety of colors of the face ring to meet the matching needs of different customers.
5. The car aluminum lamp body, which greatly improves the heat dissipation efficiency, ceiling installation, and reserved hanger mounting holes for convenient installation.

Sr. No.	Model	Power	Beam Angle	Luminous Flux	Color Temperature	Material
01	GT0156014C30G9101	14	30°	1190	3000/4000K	Aluminum
02	GT0156020C30G9101	20	30°	1700	3000/4000K	Aluminum
03	GT0156025C30G9101	25	30°	2125	3000/4000K	Aluminum





02 Indoor Lights
SPOT LIGHTS



SPOT LIGHT

Product Description

1. Modular design, can be matched with round or square face ring according to different design needs of customers.
2. Using high-quality COB light source, high light efficiency, good color rendering, high color temperature consistency.
3. Product offering Four face rings are available in silver, black, white, and black chrome to meet the needs of different customers.
4. Adopting an excellent optical system design, integrating multiple functional characteristics such as shape, material, and craftsmanship, to create a personality with excellent performance The light environment.

Sr. No.	Model	Power	Material	Beam Angle	Color Temperature	Luminous Flux
01	QS0178007C30E9101	7	Aluminum +PC	24°	3000/4000/5700K	630



QS0178007

Product Description

1. Modular design, can be matched with round or square face ring according to different design needs of customers.
2. Using high-quality COB light source, high light efficiency, good color rendering, high color temperature consistency.
3. Product offering Four face rings are available in silver, black, white, and black chrome to meet the needs of different customers.
4. Adopting an excellent optical system design, integrating multiple functional characteristics such as shape, material, and craftsmanship, to create a personality with excellent performance The light environment.

Sr. No.	Model	Power	Beam Angle	Luminous Flux	Color Temperature	Material
01	QS0178007C30E9102	7	24°	630	3000/4000/5700K	Aluminum +PC



SPOT LIGHT

Product Description

1. Accurate spot, soft and excessive, suitable for basic lighting, wall washing lighting.
2. LED light source is hidden inside, designed with a perfect shading angle of 30°, anti-glare effect is better, UGR is less than 19.
3. A variety of light control accessories , Silver, gold, black, pearl black and other secondary reflectors, small round holes, oval holes and other professional accessories.
4. The vertical direction can be adjusted by 25° to meet the lighting needs of different scenes.
5. The lamp body is made of high-quality die-cast aluminum, and the overall The style is simple and the heat dissipation is efficient.

Sr. No.	Model	Power	Beam Angle	Luminous Flux	Color Temperature	Material
01	QS0155005C30E9101	5	24°	425	3000K	Aluminum
02	QS0155012C30E9102	12	24°	1020	3000K	Aluminum
03	QS0155020C30E9101	20	24°	1700	3000K	Aluminum



SPOT LIGHT

Product Description

1. Adopt COB + large lens optical scheme, accurate light distribution, uniform spot;
2. Flexible lamp head adjustment, can rotate 355 degrees horizontally and 35 degrees vertically;
3. All metal shell, high-quality heat dissipation management, can ensure the stability of the lamp Ground work in the whole life cycle of 30000Hrs.

Sr. No.	Model	Power	Material	Beam Angle	Color Temperature	Luminous Flux
01	QS0179020C30E9102	20	Aluminum +PC	24°	3000/4000K	1700
02	QS0179030C30E9102	30	Aluminum +PC	24°	3000/4000K	2500



SPOT LIGHT

Product Description

1. Adopt COB + large lens optical scheme, accurate light distribution, uniform spot.
2. Flexible lamp head adjustment, can rotate 355 degrees horizontally and 35 degrees vertically.
3. All metal shell, high-quality heat dissipation management, can ensure the stability of the lamp Ground work in the whole life cycle of 30000Hrs.

Sr. No.	Model	Power	Material	Beam Angle	Color Temperature	Luminous Flux
01	QS0179030C40E9101	30	Aluminum +PC	24°	3000/4000K	2500



SPOT LIGHT

Product Description

1. Using high-quality COB light source, high light efficiency, good color temperature consistency, color rendering index above 80, $R9 > 0$, true and delicate color rendering.
2. Spinning aluminum alloy reflector, precise light distribution, soft light, anti-glare Good effect, comfortable and eye protection.
3. Built-in constant current drive power supply with high conversion rate, stable performance of the whole lamp.
4. The radiator of the lamp uses aviation aluminum alloy, which has good heat dissipation effect, stable use and guaranteed service life.
5. Unique The family-style design, the overall line is tough and concise, suitable for various decoration styles.

Sr. No.	Model	Power	Material	Beam Angle	Color Temperature	Luminous Flux
01	QS0152010C30E9101	10	Aluminum +PC	24°	3000/4000K	900
02	QS0152015C30E9101	15	Aluminum +PC	24°	3000/4000K	1350



SPOT LIGHT

Product Description

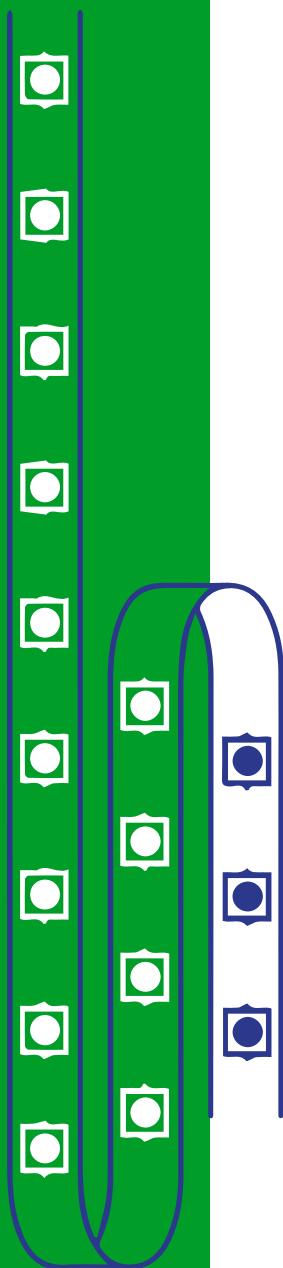
1. Using high-quality COB light source, high light efficiency, good color temperature consistency, color rendering index above 80, $R9 > 0$, true and delicate color rendering.
2. Professional reflector light distribution, uniform light scattering, uniform light spot, natural transition.
3. Built-in constant current drive power supply with high conversion rate, stable performance of the whole lamp;
4. Face ring edge flanging design, seamlessly fits the ceiling after installation, beautiful and durable.
5. The whole lamp is covered with high thermal conductivity, insulating and fireproof PC, preventing leakage, Effective heat dissipation.
6. One-piece molding, family design appearance, with white PC shell, simple and smooth lines, exquisite and beautiful.

Sr. No.	Model	Power	Material	Beam Angle	Color Temperature	Luminous Flux
01	QS0154009C30E9101	9	PP+PC	24°	3000/4000/5700K	810





03 Indoor Lights STRIP LIGHTS



Bare Strip Light

Product Description

1. Use high-quality LED lamp beads with reasonable light source arrangement, with higher brightness, lower light attenuation, uniform brightness and longer life.
2. Top technology, high light transmittance, smooth surface, no wrinkles on the circuit board.
3. Environmentally friendly plastic, no peculiar smell, safer and more environmentally friendly.
4. The connection length is up to 100 meters, which is more convenient for installation.
5. The wire design is more stable and reliable.

Sr. No.	Model	IP	Power	Voltage	Dimension	Color Temperature	Material
01	DT00023	IP20	4/6/8W	DC12/24V	W8mm	2200/2700/3000/4000/6500K	Bare PCB
02	DT00024	IP20	8/10/12W	DC12/24V	W8mm	2200/2700/3000/4000/6500K	Bare PCB
03	DT00022	IP20	10/12/14.4W	DC12/24V	W8mm	2200/2700/3000/4000/6500K-RGB	Bare PCB



Silicone Sleeve & Silicone Potting Strip Light

Product Description

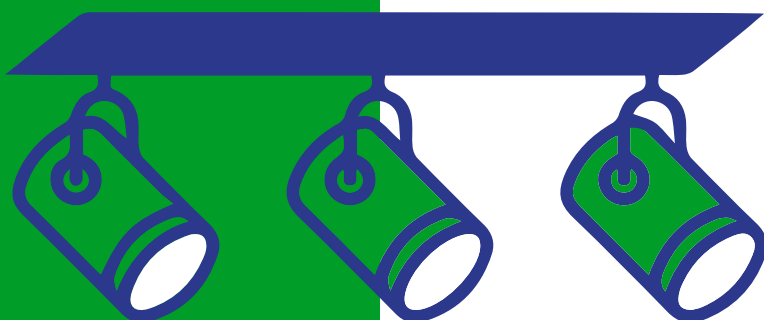
1. Use high-quality LED lamp beads with reasonable light source arrangement, with higher brightness, lower light attenuation, uniform brightness and longer life.
2. Top technology, high light transmittance, smooth surface, no wrinkles on the circuit board.
3. Environmentally friendly plastic, no peculiar smell, safer and more environmentally friendly.
4. The connection length is up to 100 meters, which is more convenient for installation.
5. The wire design is more stable and reliable.
6. Water proof silicone sleeve is added to the outside of the lamp band and water proof glue is added to the inside, which is completely sealed, Protection level is IP68.
7. Water proof silicone sleeve is added to the outside of the lamp band and no glue is injected inside. to the inside, Protection level is IP65.

Sr. No.	Model	IP	Power	Voltage	Dimension	Color Temperature	Material
01	DT00016	IP65	4/6/8W	DC12/24V	W8mm	2200/2700/3000/4000/6500K	Bare PCB
02	DT00017	IP65	8/10/12W	DC12/24V	W8mm	2200/2700/3000/4000/6500K	Bare PCB
03	DT00018	IP65	10/12/14.4W	DC12/24V	W8mm	2200/2700/3000/4000/6500K-RGB	Bare PCB
04	DT00019	IP68	4/6/8W	DC12/24V	W8mm	2200/2700/3000/4000/6500K	Bare PCB
05	DT00020	IP68	8/10/12W	DC12/24V	W8mm	2200/2700/3000/4000/6500K	Bare PCB
06	DT00021	IP68	10/12/14.4W	DC12/24V	W8mm	2200/2700/3000/4000/6500K-RGB	Bare PCB





04 Indoor Lights
TRACK LIGHTS



Chasing Shadow

Product Description

1. Using high-quality COB light source, the light color is pure, and the color temperature consistency is good.
2. Using an integrated large lens, combined with advanced optical design, the light distribution is accurate, and the spot is uniform.
3. Built-in high power factor isolation constant current drive, consistent CCC standard, stable and efficient.
4. The lamp head can be adjusted horizontally at 350° and 90° vertically, which is stable and accurate. It will not change the projection direction due to the weight of the lamp head after long-term use.
5. The appearance adopts family design and the back cover is exclusive to Huayi The elements are connected with the side waistline, which is ingenious.

Sr. No.	Model	Power	Beam Angle	Luminous Flux	Color Temperature	Material
01	GS0372020C40E5001	20	24°	1800	3000/4000K	Aluminum+PC
02	GS0372030C30E5001	30	24°	2700	3000/4000K	Aluminum+PC



Chasing Shadow

Product Description

1. Using high-quality COB light source, the light color is pure, and the color temperature consistency is good.
2. Using an integrated large lens, combined with advanced optical design, the light distribution is accurate, and the spot is uniform.
3. Built-in high power factor isolation constant current drive, consistent CCC standard, stable and efficient.
4. The lamp head can be adjusted horizontally at 350° and 90° vertically, which is stable and accurate. It will not change the projection direction due to the weight of the lamp head after long-term use.
5. The appearance adopts family design and the back cover is exclusive to Huayi The elements are connected with the side waistline, which is ingenious.

Sr. No.	Model	Power	Beam Angle	Luminous Flux	Color Temperature	Material
01	GS0372020C40E5001	20	24°	1800	3000/4000K	Aluminum+PC
02	GS0372030C30E5001	30	24°	2700	3000/4000K	Aluminum+PC





05 Indoor Lights
PANEL LIGHTS



Sidelit Panel Light

Product Description

1. Good color temperature consistency, color tolerance of <5, color rendering index of 80, to restore the nature color of the illuminated objects.
2. Scientific light distribution, panel-type structure design of the PC light-transmitting cover, high light transmission, uniform and soft light, and protect eyesight.
3. The whole lamp adopts an integrated design, reliable sealing, and later maintenance is more convenient, saving maintenance costs.

Sr. No.	Model	Power	Beam Angle	Luminous Flux	Color Temperature	Material	Size
01	QM0012036C60Z9103	36W	100°	3060Lm	6000K	Iron + Ps	600x600
02	QM0012036C60Z9104	36W	100°	3060Lm	6000K	Iron + Ps	1200x300



Backlit Panel Light

Product Description

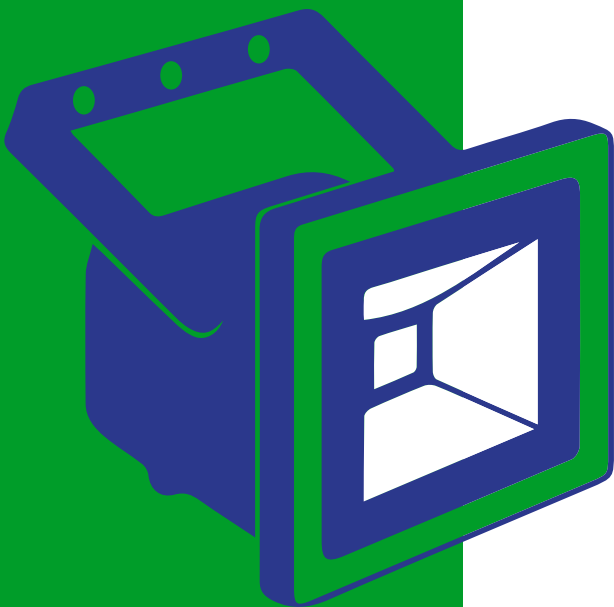
1. Good color temperature consistency, color tolerance of <5, color rendering index of 80, to restore the nature color of the illuminated objects.
2. Scientific light distribution, panel-type structure design of the PC light-transmitting cover, high light transmission, uniform and soft light, and protect eyesight.
3. The whole lamp adopts an integrated design, reliable sealing, and later maintenance is more convenient, saving maintenance costs.

Sr. No.	Model	Power	Beam Angle	Luminous Flux	Color Temperature	Material	Size
01	QM0012036C60Z9105	36W	100°	3060Lm	6000K	Iron + Ps	600x600
02	QM0012036C60Z9106	36W	100°	3060Lm	6000K	Iron + Ps	1200x300





01 Outdoor Lights
FLOOD LIGHTS



SBN LED 708 AC

Product Description

Under the condition of the same brightness, compared with the common metal halide lamp can save 50% electricity.

Design life of 30000 hours or more, is the ordinary metal halide lamps more than 3 times.

Low heat, electric energy conversion rate in more than 90%.

The green environmental protection without pollution, cold light source design, no heat radiation.

Die casting aluminum radiator convection heat dissipation, achieve excellent cooling effect, ensure the life of lights.

Rated Power	30W	50W	100W	150W
Input Voltage	220-240V	220-240V	220-240V	220-240V
Light Angle	110°	110°	110°	110°
Color Temperature	3000/4000/6000K	3000/4000/6000K	3000/4000/6000K	3000/4000/6000K
Color Index	70	70	70	70
Efficiency	85 lm/W	85 lm/W	85 lm/W	85 lm/W
Working Temperature	-20°~45°C	-20°~45°C	-20°~45°C	-20°~45°C
Protection Grade	IP65	IP65	IP65	IP65



SBN LED 707

Product Description

Under the condition of the same brightness, compared with the common metal halide lamp can save 50% electricity. Design life of 30000 hours or more, is the ordinary metal halide lamps more than 3 times.

Low heat, electric energy conversion rate in more than 90%.

The green environmental protection without pollution, cold light source design, no heat radiation.

Die casting aluminum radiator convection heat dissipation, achieve excellent cooling effect, ensure the life of lights.

Rated Power	10W	20W	30W	50W	100W	150/180/200W
Input Voltage	180-240V	180-240V	180-240V	180-240V	180-240V	180-240V
Light Angle	110°	110°	110°	110°	110°	110°
Color Temperature	3000/4000/6000K	3000/4000/6000K	3000/4000/6000K	3000/4000/6000K	3000/4000/6000K	3000/4000/6000K
Color Index	70	70	70	70	70	70
Efficiency	95 lm/W	95 lm/W	95 lm/W	95 lm/W	95 lm/W	95 lm/W
Working Temperature	-20°~45°C	-20°~45°C	-20°~45°C	-20°~45°C	-20°~45°C	-20°~45°C
Protection Grade	IP65	IP65	IP65	IP65	IP65	IP65



SBN LED 705

Product Description

Under the condition of the same brightness, compared with the common metal halide lamp can save 50% electricity. Design life of 30000 hours or more, is the ordinary metal halide lamps more than 3 times.

Low heat, electric energy conversion rate in more than 90%.

The green environmental protection without pollution, cold light source design, no heat radiation.

Die casting aluminum radiator convection heat dissipation, achieve excellent cooling effect, ensure the life of lights.

Rated Power	60W	120W	150W	180W	200W	240W
Input Voltage	180-240V	180-240V	180-240V	180-240V	180-240V	180-240V
Light Angle	110°	110°	110°	110°	110°	110°
Color Temperature	3000/4000/6000K	3000/4000/6000K	3000/4000/6000K	3000/4000/6000K	3000/4000/6000K	3000/4000/6000K
Color Index	70	70	70	70	70	70
Efficiency	100 lm/W	100 lm/W	100 lm/W	100 lm/W	100 lm/W	100 lm/W
Working Temperature	-20°~45°C	-20°~45°C	-20°~45°C	-20°~45°C	-20°~45°C	-20°~45°C
Protection Grade	IP65	IP65	IP65	IP65	IP65	IP65



SBN LED 711

Product Description

Under the condition of the same brightness, compared with the common metal halide lamp can save 50% electricity. Design life of 30000 hours or more, is the ordinary metal halide lamps more than 3 times.

Low heat, electric energy conversion rate in more than 90%.

The green environmental protection without pollution, cold light source design, no heat radiation.

Die casting aluminum radiator convection heat dissipation, achieve excellent cooling effect, ensure the life of lights.

Rated Power	60W	80W	120W	160W	200W	280W	335W
Input Voltage	180-240V	180-240V	180-240V	180-240V	180-240V	180-240V	180-240V
Light Angle	30°/60°/90°	30°/60°/90°	30°/60°/90°	30°/60°/90°	30°/60°/90°	30°/60°/90°	30°/60°/90°
Color Temperature	3000/4000/6000K	3000/4000/6000K	3000/4000/6000K	3000/4000/6000K	3000/4000/6000K	3000/4000/6000K	3000/4000/6000K
Color Index	70	70	70	70	70	70	70
Efficiency	125 lm/W	125 lm/W	125 lm/W	125 lm/W	125 lm/W	125 lm/W	125 lm/W
Working Temperature	-20°~45°C	-20°~45°C	-20°~45°C	-20°~45°C	-20°~45°C	-20°~45°C	-20°~45°C
Protection Grade	IP65	IP65	IP65	IP65	IP65	IP65	IP65



SBN LED 712/715

Product Descripton

Under the condition of the same brightness, compared with the commom metal halide lamp can save 50% electricity. Design life of 30000 hours or more, is the ordinary metal halide lamps more than 3 times.

Low heat, electric energy conversion rate in more than 90%.

The green enviromental protection without pollution, cold light source design, no heat radiation.

Die casting aluminum radiator convection heat dissipation, achieve excellent cooling effect, ensure the life of lights.

Rated Power	200W	300W	400W	550W
Input Voltage	180-240V	180-240V	180-240V	180-240V
Light Angle	45°/60°/90°	45°/60°/90°	45°/60°/90°	45°/60°/90°
Color Temperature	3000/4000/6000K	3000/4000/6000K	3000/4000/6000K	3000/4000/6000K
Color Index	70	70	70	70
Efficiency	100 lm/W	100 lm/W	100 lm/W	100 lm/W
Working Temperature	-20°~40°C	-20°~40°C	-20°~40°C	-20°~40°C
Protection Grade	IP65	IP65	IP65	IP65



SBN LED 716

Product Descripton

Under the condition of the same brightness, compared with the commom metal halide lamp can save 50% electricity. Design life of 30000 hours or more, is the ordinary metal halide lamps more than 3 times.

Low heat, electric energy conversion rate in more than 90%.

The green enviromental protection without pollution, cold light source design, no heat radiation.

Die casting aluminum radiator convection heat dissipation, achieve excellent cooling effect, ensure the life of lights.

Rated Power	240W	360W	480W	720W
Input Voltage	180-240V	180-240V	180-240V	180-240V
Light Angle	45°/60°/90°	45°/60°/90°	45°/60°/90°	45°/60°/90°
Color Temperature	3000/4000/6000K	3000/4000/6000K	3000/4000/6000K	3000/4000/6000K
Color Index	70	70	70	70
Efficiency	125 lm/W	125 lm/W	125 lm/W	125 lm/W
Working Temperature	-20°~45°C	-20°~45°C	-20°~45°C	-20°~45°C
Protection Grade	IP65	IP65	IP65	IP65



SBN LED 719 AC

Product Descripton

Under the condition of the same brightness, compared with the commom metal halide lamp can save 50% electricity. Design life of 30000 hours or more, is the ordinary metal halide lamps more than 3 times.

Low heat, electric energy conversion rate in more than 90%.

The green enviromental protection without pollution, cold light source design, no heat radiation.

Die casting aluminum radiator convection heat dissipation, achieve excellent cooling effect, ensure the life of lights.

Rated Power	100W	150W	200W	250W	300W	400W	500W	600W
Input Voltage	180-240V 220-240V	180-240V 220-240V	180-240V 220-240V	180-240V 220-240V	180-240V 220-240V	180-240V 220-240V	180-240V 220-240V	180-240V 220-240V
Light Angle	90°	90°	90°	90°	90°	90°	90°	90°
Color Temperature	3000/4000/6000K	3000/4000/6000K	3000/4000/6000K	3000/4000/6000K	3000/4000/6000K	3000/4000/6000K	3000/4000/6000K	3000/4000/6000K
Color Index	70	70	70	70	70	70	70	70
Efficiency	95 lm/W	95 lm/W	95 lm/W	95 lm/W	95 lm/W	95 lm/W	95 lm/W	95 lm/W
Working Temperature	-20°~45°C	-20°~45°C	-20°~45°C	-20°~45°C	-20°~45°C	-20°~45°C	-20°~45°C	-20°~45°C
Protection Grade	IP65	IP65	IP65	IP65	IP65	IP65	IP65	IP65



SBN LED 703 AC

Product Description

Under the condition of the same brightness, compared with the common metal halide lamp can save 50% electricity. Design life of 30000 hours or more, is the ordinary metal halide lamps more than 3 times.

Low heat, electric energy conversion rate in more than 90%.

The green environmental protection without pollution, cold light source design, no heat radiation.

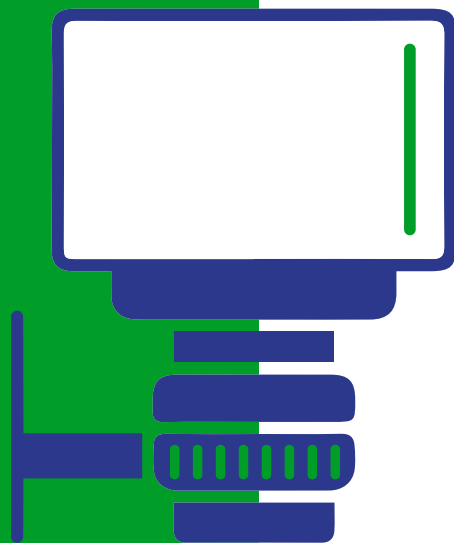
Die casting aluminum radiator convection heat dissipation, achieve excellent cooling effect, ensure the life of lights.

Rated Power	30W	50W	100W	150W
Input Voltage	220-240V	220-240V	220-240V	220-240V
Light Angle	100°, 50°	100°, 50°	100°, 50°	100°, 50°
Color Temperature	3000/4000/6000K	3000/4000/6000K	3000/4000/6000K	3000/4000/6000K
Color Index	70	70	70	70
Efficiency	100 lm/W	100 lm/W	100 lm/W	100 lm/W
Working Temperature	-20°~45°C	-20°~45°C	-20°~45°C	-20°~45°C
Protection Grade	IP65	IP65	IP65	IP65





02 Outdoor Lights
WALL LIGHTS



Wall lamp

Product Descripton

Item No.	DHK-9204
Body	Made of Aluminum
Voltage	90-260V 50-60Hz
LED Color	Warm White/ White
IP Rate	IP65
Insulation Class	Class 1
Certification	ce, VDE
Lamp Power	10W



Wall lamp

Product Descripton

Item No.	DHK-9205
Body	Made of Aluminum
Voltage	220V AC 50/60HZ
LED Color	Warm White/ White
IP Rate	IP65
Insulation Class	Class 1
Certification	ce, VDE
Lamp Power	10W



Cap Wall lamp

Product Descripton

Item No.	DHK-9207
Body	Made of Aluminum
Voltage	90-260V 50-60Hz
LED Color	Warm White/ White
IP Rate	IP65
Insulation Class	Class 1
Certification	ce, VDE
Lamp Power	2*1W



Wall lamp

Product Description

Item No.	DHK-9211
Body	Made of Aluminum
Voltage	90-260V 50-60Hz
LED Color	Warm White/ White
IP Rate	IP65
Insulation Class	Class 1
Certification	ce, VDE
Lamp Power	7W



Compound Wall Light

Product Description

Item No.	DHK-9176
Body	Made of Aluminum
Voltage	220V/50Hz
Diffuser	Frosted glass
IP Rate	IP55
Beam Angle	120°
Rated Power	20W



Stainless Steel Compound Wall Light

Product Description

Item No.	DHK-9177
Voltage	220V/50Hz
Diffuser	Artificial marble
IP Rate	IP55
Beam Angle	120°
Rated Power	24W



Stainless Steel Antique Boundary Wall Light

Product Descripton

Item No.	DHL-1541
Voltage	220V/50Hz
Diffuser	Artificial marble
IP Rate	IP55
Color Temperature	3000K
Rated Power	45-65W



European Style Outdoor Light

Product Descripton

Item No.	RHS-17403
Body	Made of aluminum
Diffuser	Frosted glass
IP Rate	IP65
Voltage	220V
Rated Power	45-65W



Wall Bracket Lantern Light

Product Descripton

Item No.	RHS-14336
Body	Made of Stainless steel
Diffuser	Plastic
IP Rate	IP65
Rated Power	45-65W
Certification	CCC, ce, EMC, FCC, LVD, VDE



Garden Light and Lantern

Product Descripton

Item No.	RHS-15407
Body	Made of aluminum
Diffuser	Clear glass
IP Rate	IP65
Rated Power	45-65W
Voltage	220V



Classic Wall Lamp

Product Descripton

Item No.	DHK-9192
Body	Made of Aluminum
Diffuser	PC
IP Rate	IP65
Insulation Class	Class 1
Voltage	90-260V 50-60Hz



Traditional Lantern Wall Bracket Light

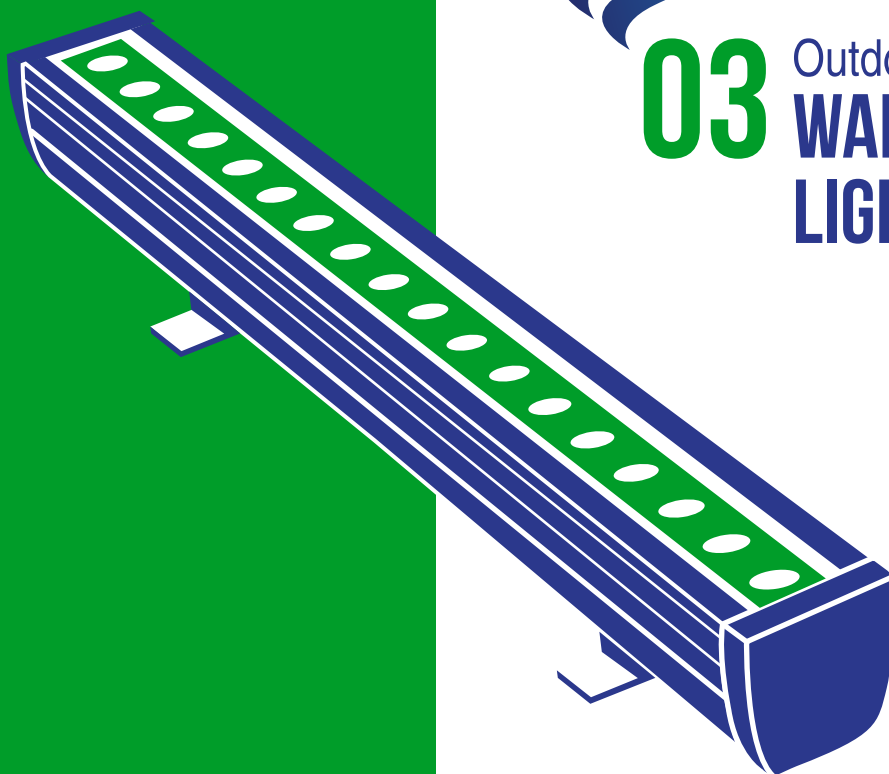
Product Descripton

Item No.	RHT-13313
Body	Made of aluminum
Diffuser	Clear PC
IP Rate	IP55
Rated Power	18-35W
Certification	220V





03 Outdoor Lights
**WALL WASHER
LIGHTS**



LED Wall Washer Lights

Product Description

1. The most efficient led with the best brightness and equality, and the waterproof rate is up to IP65.
2. The expected life time of our led is 50.000 hours. at least about 5 years.
3. The housing of the lamp is made by Extrusion Aluminum.
4. The housing has a good cooling system and it's high temperature resistance and waterproofness the tempered glass can be high transmission and cash resistance.

Sr. No.	Model	IP	Power	Voltage	Color Temperature	Temperature
01	X0043	IP65	18W	DC24V	3000/4000/6000K-RGB	-20°C/45°C
02	X0044	IP65	24W	DC24V	3000/4000/6000K-RGB	-20°C/45°C
03	X0045	IP65	36W	DC24V	3000/4000/6000K-RGB	-20°C/45°C
04	X0048	IP65	48W	DC24V	3000/4000/6000K-RGB	-20°C/45°C



LED Wall Washer Lights

Product Description

1. The most efficient led with the best brightness and equality, and the waterproof rate is up to IP65.
2. The expected life time of our led is 50.000 hours. at least about 5 years.
3. The housing of the lamp is made by Extrusion Aluminum.
4. The housing has a good cooling system and it's high temperature resistance and waterproofness the tempered glass can be high transmission and cash resistance.

Sr. No.	Model	IP	Power	Voltage	Color Temperature	Temperature
01	Q00019-18	IP65	18W	DC24V	3000K	-20°C/45°C
02	Q00019-24	IP65	24W	DC24V	3000K	-20°C/45°C
03	Q00020	IP65	36W	DC24V	3000K	-20°C/45°C



LED Wall Washer Lights

Product Description

1. The most efficient led with the best brightness and equality, and the waterproof rate is up to IP65.
2. The expected life time of our led is 50.000 hours. at least about 5 years.
3. The housing of the lamp is made by Extrusion Aluminum.
4. The housing has a good cooling system and it's high temperature resistance and waterproofness the tempered glass can be high transmission and cash resistance.

Sr. No.	Model	IP	Power	Voltage	Color Temperature	Temperature
01	Q00006	IP65	9W	DC24V	3000K/ 4000K/5000K	-20°C/45°C
02	Q00007	IP65	12W	DC24V	3000K/ 4000K/5000K	-20°C/45°C
03	Q00008	IP65	18W	DC24V	3000K/ 4000K/5000K	-20°C/45°C
04	Q00009	IP65	24W	DC24V	3000K/ 4000K/5000K	-20°C/45°C



LED Wall Washer Lights

Product Description

1. The most efficient led with the best brightness and equality, and the waterproof rate is up to IP65.
2. The expected life time of our led is 50.000 hours. at least about 5 years.
3. The housing of the lamp is made by Extrusion Aluminum.
4. The housing has a good cooling system and it's high temperature resistance and waterproofness the tempered glass can be high transmission and cash resistance.

Sr. No.	Model	IP	Power	Voltage	Color Temperature	Temperature
01	Q00016	IP65	18W	DC24V	3000K/ 4000K/5700K	-20°C/45°C
02	Q00017	IP65	24W	DC24V	3000K/ 4000K/5700K	-20°C/45°C
03	Q00018	IP65	36W	DC24V	3000K/ 4000K/5700K	-20°C/45°C



LED Wall Washer Lights

Product Description

1. The most efficient led with the best brightness and equality, and the waterproof rate is up to IP65.
2. The expected life time of our led is 50.000 hours. at least about 5 years.
3. The housing of the lamp is made by Extrusion Aluminum.
4. The housing has a good cooling system and it's high temperature resistance and waterproofness the tempered glass can be high transmission and cash resistance.

Sr. No.	Model	IP	Power	Voltage	Color Temperature	Temperature
01	Q00021	IP65	72W	DC24V	3000K	-20°C/45°C



LED Wall Washer Lights

Product Description

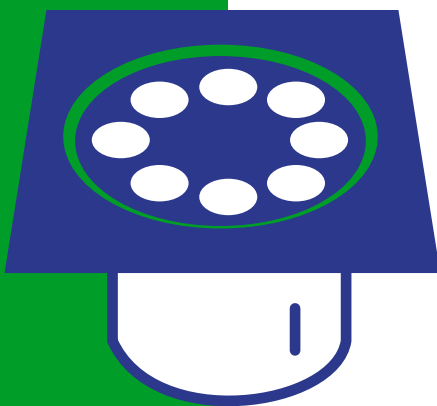
1. The most efficient led with the best brightness and equality, and the waterproof rate is up to IP65.
2. The expected life time of our led is 50.000 hours. at least about 5 years.
3. The housing of the lamp is made by Extrusion Aluminum.
4. The housing has a good cooling system and it's high temperature resistance and waterproofness the tempered glass can be high transmission and cash resistance.

Sr. No.	Model	IP	Power	Voltage	Color Temperature	Temperature
01	Q00024	IP65	72W	DC24V	3000K	-20°C/45°C





04 Outdoor Lights
**INGROUND
LIGHTS**



LED Inground Lights Adjustable

Product Descripton

Outdoor round design ajustable view angle LED inground light is New product design, make the light effect more beautiful and more efficiency. Customized inground light is available. Long life span and low maintenace let our brand earth much reputation in China and oversea. Under great quality control LED Underground Light with brand chip , driver and good stain-less steel and aluminum housing body take big part in lighting project.

Sr. No.	Model	Rated Power	Voltage	Hole Size	N.W/G.W
01	XYH-T826	18*1.5w	AC100-240V/50-60HZ	P250*H265mm	7.9kg/8.2kg



LED Inground Pool Lights

Product Descripton

LED underground swimming pool light This product is a stainless steel lamp body with an ABS plastic shell attached to the outside of the lamp, so that when the lamp is installed, the protection lamp is not scratched and easy to install, and the illuminated light will not be a bundle.

Sr. No.	Model	Rated Power	Voltage	Size	Waterproof	Weight
01	XYH100GM	3W	AC/DC12V/24V;AC220V	φ100*H75mm	ip67	0.5kg



Waterproof Remote Control Inground Lights

Product Descripton

1. High purity aluminum, it is with Corrosion resistance, Anti cracking and Compressive resistance.
2. After the baking process, the color will never fade.
3. Adopt quality stainless steel glass, it is with high strength and breakage-proof. The light transmittance is up to 90%.
4. The waterproof Interface, it is dustproof, waterproof, etch-proof and Insulated.

Sr. No.	Certifications	Rated Power	Voltage	Beam Angle	Size
01	ISO9001,CE,ROHS,IP68	18-24w	12v,24v,220v	15°,30°,45°,90° (could be customized)	L250*W259*H65mm



Waterproof Garden Led Inground Light

Product Descripton

1. IP67 Recessed 36W Waterproof garden Led Inground Light.
2. Cast aluminum, stainlesssteel with the radiator, Plastic embedded parts,high transparent toughened glass, anti-aging silicone seal.
3. The lamps own the strong structureand strict manufacturing proess technology, high safety, long life, low carbon and can save the energy it owns the high quality,which can be used in many parts of landscape, such as,garden, public square, lawn, courtyard, flower beds, pedestrian street decoration, waterfall, fountain, etc. All can make our life colorful.
4. Our factory cancustomizedifferent products according to your special requirements. We can provide the perfect customizationfor you.
5. There are multi-colorfulproducts for your choice.RGBcan be provided for customers.
6. We will reply all inquiry within 24 hours,the reliable after-sale service and patiencewill make you feel satisfied and pleasant.

Sr. No.	Material	Rated Power	Voltage	IP Grade	Beam Angle	Size
01	Stainless steel	18, 24, 39, 36W	12V, 24V, 220V	IP67	10°-90°	Φ:250mm H:120mm



Led Inground Light

Product Descripton

The garden Inground lights can be directly inserted into the garden, in the dirt next to the aisle, this lamp is all stainless steel material, size, power, voltage, product packaging can be customized.

Sr. No.	Model	Rated Power	Voltage	Amount	Light Angle	Weight
01	XYH200MF-36	5W	AC/DC12V 24V/220V	36	10° -120°	1.5Kg
02	XYH200MF-45	7W	AC/DC12V 24V/220V	45	10° -120°	1.5Kg



Underwater Led Lights for Fountains

Product Descripton

Regular and competitive design 36watt Led Underwater Light with RGB color. Strong bracket structure work with bright-ness LED chip and stable LED driver. Long life span time and low maintenance cost will be for kinds of project. IP68 level and 24V make the light safe operation.

Sr. No.	Model	Rated Power	Voltage	Dimension
01	XYH250G-36*1W	36W	AC/DC24V,AC220V	250*148mm
02	XYH250G-45*1W	45W	AC/DC24V,AC220V	250*148mm
03	XYH250G-18*3W	54W	AC/DC24V,AC220V	250*175mm
04	XYH250G-24*3W	72W	AC/DC24V,AC220V	250*175mm
05	XYH250G-36*3W	108W	AC/DC24V,AC220V	250*175mm



Water Fountain Lights Submersible

Product Descripton

LED stainless steel underwater lights, you can add impressive color choices in the water, there are seven colors of red, yellow, green, blue, white, warm white, RGB for your choice. IP68 super waterproof performance, can work normally underwater, even diving for several meters without any problem. At the same time, you only need to use the 24 volt safe low voltage to operate normally. It is easy to install. The underwater light can do 12w, 27w.

Sr. No.	Model	Rated Power	Voltage	Color	Material	Water Proof
01	XYH166GK-12W	12W	12/24v	RGB/Single color	SS	IP68
02	XYH166GK-27W	27W	12/24v	RGB/Single color	SS	IP68





01 Industrial Lights
**STREET
LAMP HEAD**

Led Street Light JD-1052

Product Description

1. 20W and 30W and 40W LED street light.
2. Philip led and PMMC lens.
3. High intensity die-cast Aluminium body.
4. Protection grade: IP66.
5. IK08.

Specification	JD-1052A	JD-1052B	JD-1052AC
Driver Current (mA)	400mA	600mA	700mA
LED Current (mA)	80mA	120mA	140mA
LED Quantity	PHILIP LUXEON 40pcs	PHILIP LUXEON 40pcs	PHILIP LUXEON 40pcs
Rate Power	20W	30W	40W
Color Temperature	6500/4000/3000K	6500/4000/3000K	6500/4000/3000K
Luminous Flux	2600lm/6500K	4000lm/6500K	5200lm/6500K
Input Voltage	AC100-277V	AC100-277V	AC100-277V
Frequency Range	50/60Hz	50/60Hz	50/60Hz
Color Temperature	RA75	RA75	RA75
Temperature	-40°C - 50°C	-40°C - 50°C	-40°C - 50°C
LED life time	70000h	70000h	70000h
Protestion Grade	IP66	IP66	IP66
Net Weight	1.3kgs	1.3kgs	1.3kgs
Product Size	397*110*61mm	397*110*61mm	397*110*61mm



Led Street Light JD-1043A

Product Description

1. 30W,60W LED street light.Two wattge for choice.
2. CREE XTE led and Inventronic driver.
3. High intensity die-cast Aluminium body.
4. High transparent temper glass reach to 93%.
5. Modular optical lens design. 3 types photo metric for choice.
6. Tool-free opening and maintaining.
7. IK09.
8. Protection grade: IP66
9. Auto Switch,Surge protector, breather and photocell for choice

Specification	JD-1043A 30W	JD-1043B 60W	JD-1043B	JD-1043B
Electric Current (mA)	430mA	467mA	150mA	150mA
LED Quantity	24pcs Cree XTE	48pcs Cree XTE	105pcs 3030	135pcs 3030
Rate Power	30W	60W	90W	120W
Color Temperature	6500/4000/3000K	6500/4000/3000K	6500/4000/3000K	6500/4000/3000K
Luminous Flux	3000lm/6500K	6000lm/6500K	10000lm/6500K	12000lm/6500K
Input Voltage	AC100-277V	AC100-277V	AC100-277V	AC100-277V
Frequency Range	50/60 Hz	50/60 Hz	50/60 Hz	50/60 Hz
Color Temperature	RA75	RA75	RA75	RA75
Temperature	-40°C - 50°C	-40°C - 50°C	-40°C - 50°C	-40°C - 50°C
LED life time	70000h	70000h	70000h	70000h
Protestion Grade	IP66	IP66	IP66	IP66
Net Weight	7.35 kgs	7.82kgs	8.2 kgs	9.8 kgs
Product Size	743*516*122mm	743*516*122mm	743*516*122mm	743*516*122mm



LED STREET LIGHT JD-1047GHI

Product Description

1. 120W-240W LED street light.
2. CREE XTE led and Meanwell driver.
3. High intensity die-cast Aluminium body.
4. High transparent temper glass reach to 93%.
5. Modular optical lens design. Easy improve optical in future.
6. Tool-free opening and maintaining.
7. IK09.
8. Auto Switch, Surge protector and photocell for choice

Specification	JD-1047G	JD-1047H	JD-1047I
Electric Current (mA)	120mA	120mA	120mA
LED Quantity	3030	3030	3030
Rate Power	120W	150W	200W
Color Temperature	6500/4000/3000K	6500/4000/3000K	6500/4000/3000K
Luminous Flux	100LUM/W	100LUM/W	100LUM/W
Input Voltage	AC100-277V	AC100-277V	AC100-277V
Frequency Range	50/60 Hz	50/60 Hz	50/60 Hz
Color Temperature	RA75	RA75	RA75
Temperature	-40°C - 50°C	-40°C - 50°C	-40°C - 50°C
LED life time	70000h	70000h	70000h
Protection Grade	IP66	IP66	IP66
Net Weight	11.4 kgs	11.8 kgs	12 kgs
Product Size	850*400*165mm	828*377*139mm	850*400*165mm



Led Street Light JD-1048A/B

Product Description

1. 30W/60W LED street light.
2. CREE XTE led and Meanwell driver.
3. High intensity die-cast Aluminium body.
4. High transparent temper glass reach to 93%.
5. Tool-free opening and maintaining.
6. IK09.
7. Protection grade: IP66.
8. Surge protector and photocell for choice.

Specification	JD-1047G	JD-1047H	JD-1047I	JD-1048D
LED Quantity	24pcs	30pcs	48pcs	60pcs
Rate Power	30W	60W	90W	120W
Color Temperature	6500/4000/3000K	6500/4000/3000K	6500/4000/3000K	6500/4000/3000K
Luminous Flux	100LUM/W	100LUM/W	100LUM/W	100LUM/W
PF	0.92	0.92	0.92	0.92
Net Weight	5.8 kgs	6.0 kgs	7.8 kgs	7.0 kgs
Product Size	640*265*110mm	640*265*110mm	700*305*120mm	700*305*120mm



Led Street Light JD-1037A

Product Description

1. 30W-60W LED street light.
2. 1pc module (Philip Luxeon 3030 led), Meanwell driver.
3. PMMA Modular optical lens design.
4. Can add and reduce modules from 1-5 pcs. Suitable 30-300W.
5. High intensity die-cast Aluminium body. IK08
6. Protection grade: Optical IP68, Driver department IP66
7. Auto Switch, Surge protector and photocell for choice.

Specification	JD-1037A	JD-1037B	JD-1037C	JD-1037D	JD-1037E
LED Quantity	One Module	Two Modules	Three Modules	Four Modules	Five Modules
Rate Power	60W	120W	180W	240W	300W
Color Temperature	6500/4000/3000K	6500/4000/3000K	6500/4000/3000K	6500/4000/3000K	6500/4000/3000K
Luminous Flux	110LUM/W	110LUM/W	110LUM/W	110LUM/W	110LUM/W
PF	0.92	0.92	0.92	0.92	0.92
Net Weight	5.46 kgs	6.6 kgs	7.74 kgs	8.9 kgs	101 kgs
Product Size	533*335*115mm	609*335*115mm	685*335*115mm	761*335*115mm	837*335*115mm



Led Street Light JD-1049D/E

Product Description

1. 150W/200W LED street light.
2. PHILIP 3030 led and PHILIP driver.
3. High intensity die-cast Aluminium body.
4. High transparent temper glass reach to 93%.
5. Tool-free opening and maintaining.
6. IK09.
7. Protection grade: IP66.
8. Surge protector and photocell for choice.

Specification	JD-1047G	JD-1047H
LED Quantity	48pcs 30301ed*4	48pcs 30301ed*5
Color Temperature	6500/4000/3000K	6500/4000/3000K
Luminous Flux	100LM/W	100LM/W
Frequency Range	50/60Hz	50/60Hz
Net Weight	10.8kgs	11kgs
Product Size	800*315*50mm	800*315*50mm



Led Street Light JD-1050 G/H

Product Description

1. 120W/150W LED street light.
2. Epistar 1LA5 led or Philip 3030 led and Meanwell driver.
3. High intensity die-cast Aluminium body.
4. High transparent temper glass reach to 93%.
5. IK09.
6. Protection grade: IP66.
7. Surge protector and photocell for choice.

Specification	JD-1050G	JD-1049E
LED Quantity	120pcs	150pcs
Color Temperature	6500/4000/3000K	6500/4000/3000K
Luminous Flux	100LM/W	100LM/W
Net Weight	5.5Kg	5.5Kg
Product Size	700*300*100	700*300*100



Led Street Light JD-1045w

Product Description

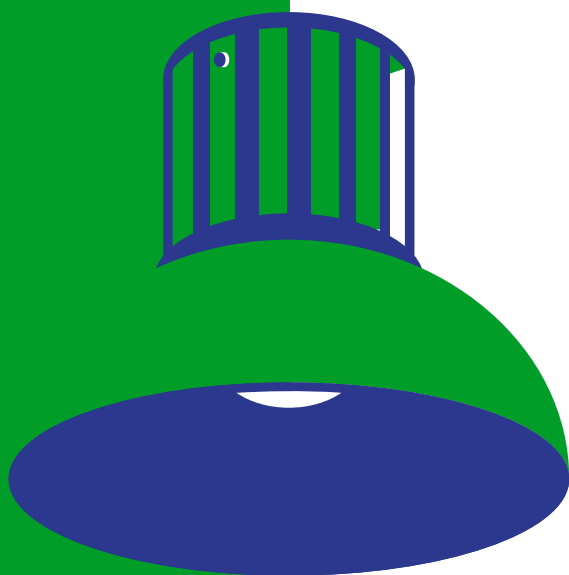
1. Modern fashion design of appearance, made the light become an artwork, Integrated with the environment perfectly, to made is as top project.
2. Used in high strength aluminum die casting material,surface anit-ageing electrostatic spray processing, super resistance to corrosion.
3. Hightransparent tempered glass cover, high strength impact resistance.
4. Input Voltage: AC110-277V, 50/60Hz, IP66, Ik09
5. Angle adjustable: +15°~ -15°
6. Different type lens for choice
7. Windy area :570cm2

Specification	JD-1045W30W	JD-1045W60W
LED Quantity	24pcs Cree XTE	48pcs Cree XTE
Color Temperature	6500/4000/3000K	6000lm/4000K
Luminous Flux	3000lm/4000K	100LM/W
Net Weight	7.35kgs	7.82kgs
Product Size	550*516*204mm	550*516*204mm





02 Industrial Lights
HIGH BAY LIGHTS



SBN-LED901

Product Description

Rated Power	40W	60W	80W	120W	150W
Input Voltage	180-240V	180-240V	180-240V	180-240V	180-240V
Light Angle	90°, 90°	90°, 90°	90°, 90°	90°, 90°	90°, 90°
Color Temperature	3000-6000K	3000-6000K	3000-6000K	3000-6000K	3000-6000K
Color Index	70	70	70	70	70
Efficiency	110 lm/W	110 lm/W	110 lm/W	110 lm/W	110 lm/W
Working Temperature	-20°~45°C	-20°~45°C	-20°~45°C	-20°~45°C	-20°~45°C
Protection Grade	IP54	IP54	IP54	IP54	IP54



SBN-LED902AC

Product Description

Rated Power	60W	100W	150W
Input Voltage	220-240V	220-240V	220-240V
Light Angle	70°, 70°	70°, 70°	70°, 70°
Color Temperature	3000-6000K	3000-6000K	3000-6000K
Color Index	70	70	70
Efficiency	95 lm/W	95 lm/W	95 lm/W
Working Temperature	-20°~45°C	-20°~45°C	-20°~45°C
Protection Grade	IP54	IP54	IP54



SBN-LED902

Product Description

Rated Power	60W	120W	150W	180W	200W	240W
Input Voltage	180-240V	180-240V	180-240V	180-240V	180-240V	180-240V
Color Temperature	3000-6000K	3000-6000K	3000-6000K	3000-6000K	3000-6000K	3000-6000K
Efficiency	100 lm/W	100 lm/W	100 lm/W	100 lm/W	100 lm/W	100 lm/W
Working Temperature	-20°~45°C	-20°~45°C	-20°~45°C	-20°~45°C	-20°~45°C	-20°~45°C
Protection Grade	IP54	IP54	IP54	IP54	IP54	IP54



SBN-LED902MINI

Product Description

Rated Power	60W	120W	150W	180W	200W	240W
Input Voltage	180-240V	180-240V	180-240V	180-240V	180-240V	180-240V
Color Temperature	3000-6000K	3000-6000K	3000-6000K	3000-6000K	3000-6000K	3000-6000K
Efficiency	≥100 lm/W	≥100 lm/W	≥100 lm/W	≥100 lm/W	≥100 lm/W	≥100 lm/W
Working Temperature	-20°~45°C	-20°~45°C	-20°~45°C	-20°~45°C	-20°~45°C	-20°~45°C
Protection Grade	IP54	IP54	IP54	IP54	IP54	IP54



SBN-LED905

Product Description

Rated Power	60W	80W	100W	120W	150W	200W
Input Voltage	180-240V	180-240V	180-240V	180-240V	180-240V	180-240V
Color Temperature	3000-6000K	3000-6000K	3000-6000K	3000-6000K	3000-6000K	3000-6000K
Efficiency	100 lm/W	100 lm/W	100 lm/W	100 lm/W	100 lm/W	100 lm/W
Working Temperature	-20°~65°C	-20°~65°C	-20°~65°C	-20°~65°C	-20°~65°C	-20°~65°C
Protection Grade	IP65	IP65	IP65	IP65	IP65	IP65



SBN-LED906

Product Description

Rated Power	80W	100W	120W	150W	180W	200W	240W
Input Voltage	180-240V	180-240V	180-240V	180-240V	180-240V	180-240V	180-240V
Color Temperature	3000-6000K	3000-6000K	3000-6000K	3000-6000K	3000-6000K	3000-6000K	3000-6000K
Efficiency	120 lm/W	120 lm/W	120 lm/W	120 lm/W	120 lm/W	120 lm/W	120 lm/W
Working Temperature	-20°~45°C	-20°~45°C	-20°~45°C	-20°~45°C	-20°~45°C	-20°~45°C	-20°~45°C
Protection Grade	IP54	IP54	IP54	IP54	IP54	IP54	IP54



SBN-LED902AC

Product Description

Rated Power	100W	150W	200W
Input Voltage	180-240V	180-240V	180-240V
Color Temperature	3000-6000K	3000-6000K	3000-6000K
Efficiency	110 lm/W	110 lm/W	110 lm/W
Working Temperature	-20°~45°C	-20°~45°C	-20°~45°C
Protection Grade	IP54	IP54	IP54



SBN-LED902AC

Product Description

Rated Power	120W	180W	240W
Input Voltage	180-240V	180-240V	180-240V
Color Temperature	3000-6000K	3000-6000K	3000-6000K
Efficiency	125 lm/W	125 lm/W	125 lm/W
Working Temperature	-20°~45°C	-20°~45°C	-20°~45°C
Protection Grade	IP65	IP65	IP65





宏景城基
CHALMAX LIMITED

QINGDAO CHALMAX TRADING CO. LTD.

Office 2607, Zhaoyin Mansion, 36 Hongkong
Middle Road, Qingdao 266071, China.

Tel: +86 (0) 532 82661521, 82661617

Fax: +86 (0) 532 82661522